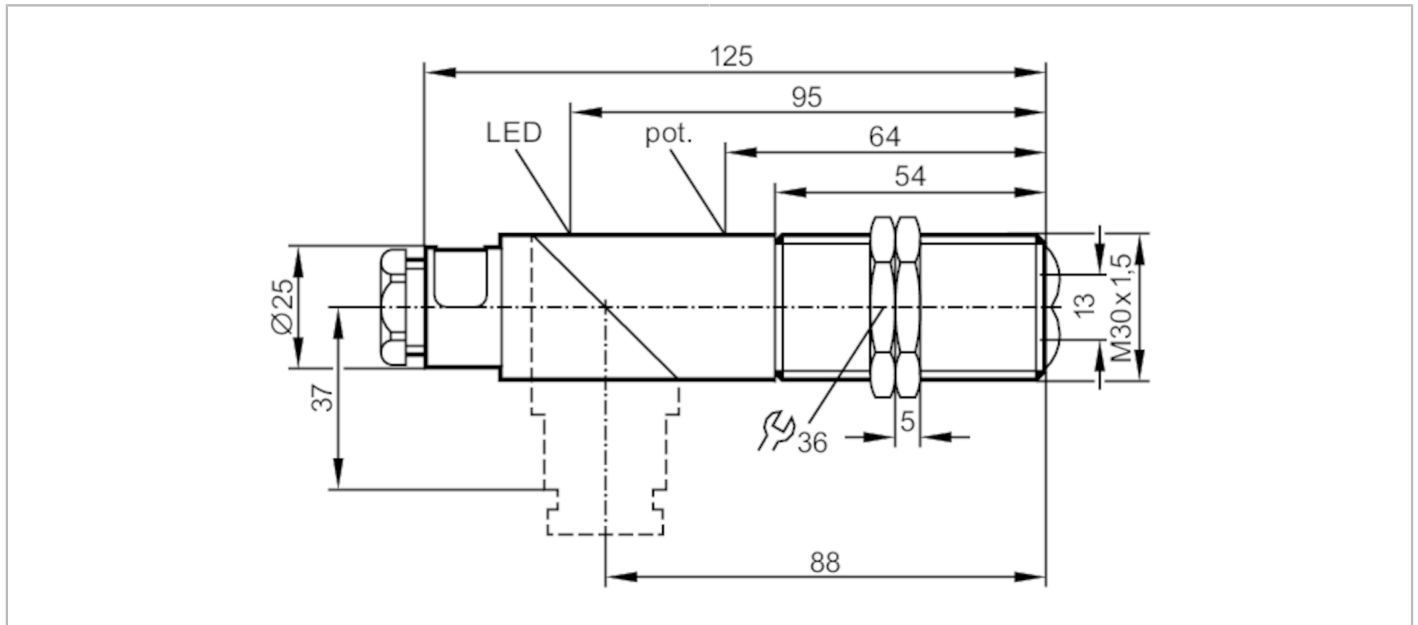


OI0003



Retro-reflective sensor

OIP-FBOA



| Application | |
|--|---------------------------------------|
| Function principle | Retro-reflective sensor |
| Electrical data | |
| Operating voltage [V] | 20...250 AC/DC |
| Protection class | II |
| Reverse polarity protection | no |
| Type of light | red light |
| Wave length [nm] | 660 |
| Outputs | |
| Output function | light-on/dark-on mode; (programmable) |
| Max. voltage drop switching output DC [V] | 10.5 |
| Max. voltage drop switching output AC [V] | 10.5 |
| Minimum load current [mA] | 15 |
| Max. leakage current [mA] | 6 |
| Permanent current rating of switching output AC [mA] | 250; (350 (...50 °C)) |
| Permanent current rating of switching output DC [mA] | 250; (350 (...50 °C)) |
| Short-time current rating of switching output [mA] | 2200; (10 ms / 0,5 Hz) |
| Switching frequency AC [Hz] | 25 |
| Switching frequency DC [Hz] | 35 |
| Short-circuit proof | no |
| Overload protection | no |



Retro-reflective sensor

OIP-FBOA

| Monitoring range | | |
|---|---|-----------------|
| Range referred to prismatic reflector [m] | 0.15...2; (Prismatic reflector Ø 80 E20005) | |
| Range adjustable | yes | |
| Max. light spot diameter [mm] | 200 | |
| Light spot dimensions refer to | at maximum range | |
| Polarization filter available | yes | |
| Operating conditions | | |
| Ambient temperature [°C] | -25...60 | |
| Protection | IP 65 | |
| Tests / approvals | | |
| EMC | EN 60947-5-2 | |
| MTTF [years] | 310 | |
| Mechanical data | | |
| Weight [g] | 121 | |
| Housing | Threaded type | |
| Dimensions [mm] | M30 x 1.5 / L = 125 | |
| Thread designation | M30 x 1.5 | |
| Material | PBT; PPO modified | |
| Lens material | PMMA | |
| Displays / operating elements | | |
| Display | Switching status | 1 x LED, yellow |
| Electrical connection | | |
| Required protection | miniature fuse to IEC60127-2 sheet 1; ≤ 2 A; fast acting | |
| Accessories | | |
| Accessories (supplied) | lock nuts: 2 x screwdrivers | |
| Remarks | | |
| Remarks | Recommendation: check the unit for reliable function after a short circuit. | |
| Pack quantity | 1 pcs. | |

OI0003



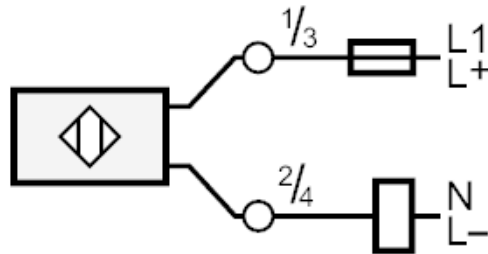
Retro-reflective sensor

OIP-FBOA

Electrical connection

terminals: ...1.5 mm²; Cable sheath: Ø 7...13 mm; Cable gland: M20 X 1.5

Connection



Note : miniature fuse to IEC60127-2 sheet 1 ≤ 2 A fast acting

Diagrams and graphs

excess gain graph

